



staron®

Solid Surfaces

BEAUTY, VERSATILITY,
FUNCTIONALITY

STARON.UK.COM

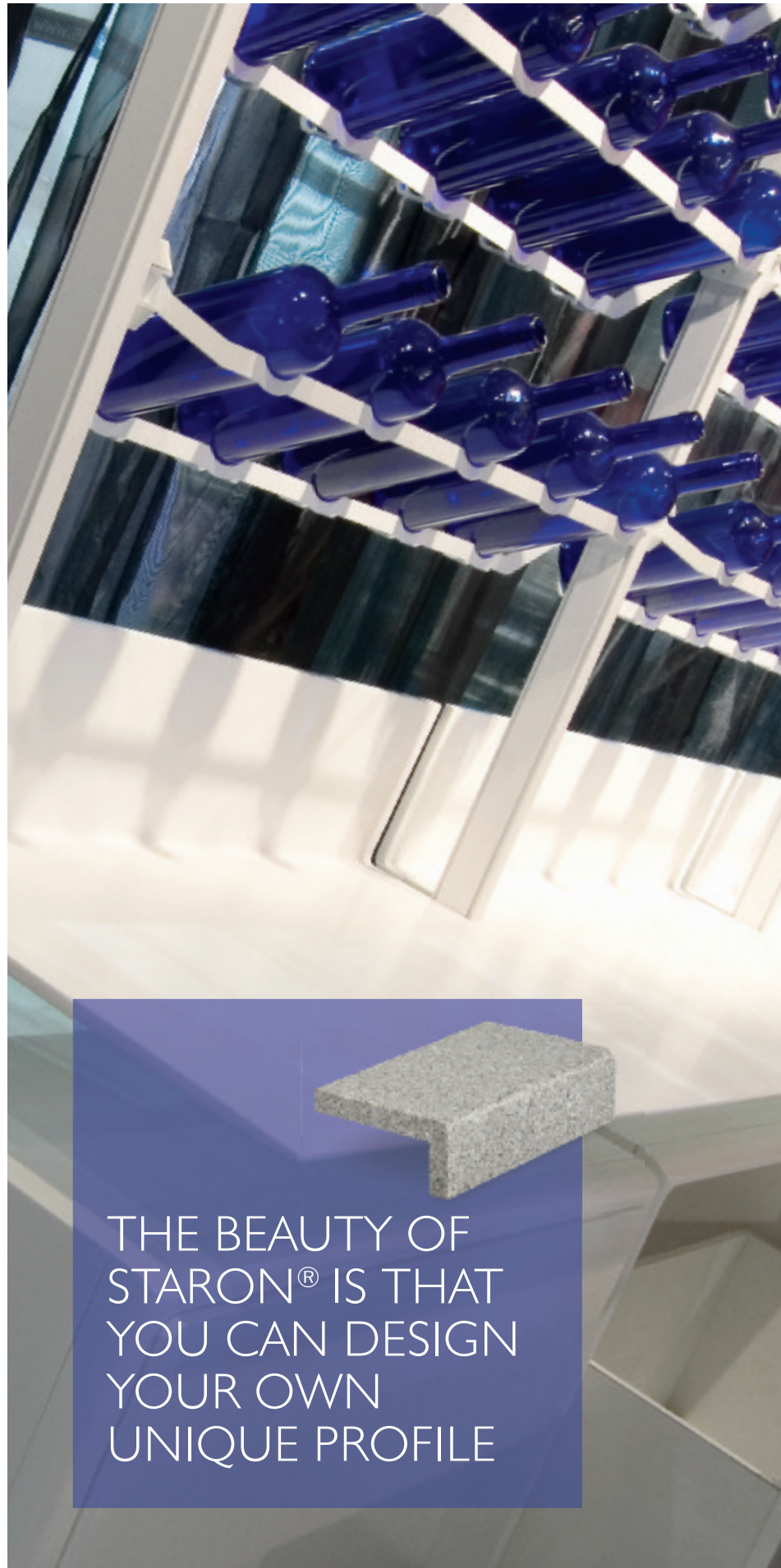


Staron is a unique blend of acrylic polymer, natural minerals and pigments that is flexible, durable and visually breathtaking.



BEAUTY,
VERSATILITY,
FUNCTIONALITY

IMAGINE A MATERIAL THAT CAN MORPH INTO A MYRIAD OF SHAPES THAT CAN FORM LONG, STYLISH SWEEPS, SEXY CURVES OR SHARP ANGLES. A PRODUCT WHOSE APPLICATIONS ARE LIMITLESS, A TRULY CONTEMPORARY MATERIAL FOR DESIGNERS WHO CRAVE A NEW WAY TO BRING LIFE TO THEIR CONCEPTS.



THE BEAUTY OF
STARON® IS THAT
YOU CAN DESIGN
YOUR OWN
UNIQUE PROFILE



staron[®]
Solid Surfaces

BEAUTY

SOLID SURFACE

Staron's colourful designs are not just skin deep... they run consistently and throughout its thickness.

This solid colour effect allows Staron to follow the contours of a shape without the need for joints or separately applied edges. Machined areas such as cut outs, edge profiles and engraving will continue to show the surface design.

Because Staron adhesive, sheets, bowls and sinks are all made of the same polymer, the seams are fused together with joints that are inconspicuous. This creates a naturally flowing, one piece appearance that is not only smart, but is also hygienic, completely waterproof and easy to clean.

UPSTANDS AND SPLASHBACKS

Colour matched Staron upstands or tall splashbacks are the perfect way to protect walls from spills and splashes and completes a sleek seamless look.



staron®
Solid Surfaces

THE INFINITE
SHAPES OF
STARON® CAN
BE USED FOR
BOTH PRACTICAL
AND AESTHETIC
DESIGN CRITERIA

*lämmli*_archite



VERSATILITY

ENDLESS SHAPES

Thermo-plastic formability means Staron's applications are limitless: it can be heat formed to fit into narrow spaces or sculpted into dramatic curves and exciting shapes. And of course the shapes and curves are completely seamless! No loss of structure or any other physical properties of Staron are compromised by this thermoforming process and the resultant shapes and curves are completely stable after the process is complete.

TRANSLUCENCY AND SUBLIMATION

Staron's unique translucent qualities when backlit can create an eye-catching focal point and help you make the right first impression with a stunning lobby area or reception desk to woo new clients.

How about personalising your Staron by placing an image or logo within the surface? Create truly unique colours and designs through the technique of sublimation – a high temperature printing process whereby special dyes permeate the surface of the Staron. Unlike other surface printing methods, the resulting design is embedded into the Staron surface and therefore retains its colour and can be sanded or polished depending on surface texture requirements. Sublimation is ideal for corporate branding opportunities and to create long lasting, individual patterns for worksurfaces and wall panels.



FUNCTIONALITY

WATERPROOF AND HYGIENIC

Staron is 100% waterproof and because it is not a multi-layered product, it will not delaminate. Staron is chemically inert and is a completely safe surface. It is easy to clean and 100% non-porous, so harmful germs are prevented from being absorbed within the surface. Also, because Staron has smooth inconspicuous seams, there are no unsightly joints for dangerous bacteria to develop. Staron is certified NSF-51 food-safe, which makes it a perfect surface for food preparation.

EASY TO CLEAN AND MAINTAIN

A damp cloth and mild detergent are all that is needed to deal with everyday spills and to keep Staron surfaces looking good.

FIRE RETARDANT

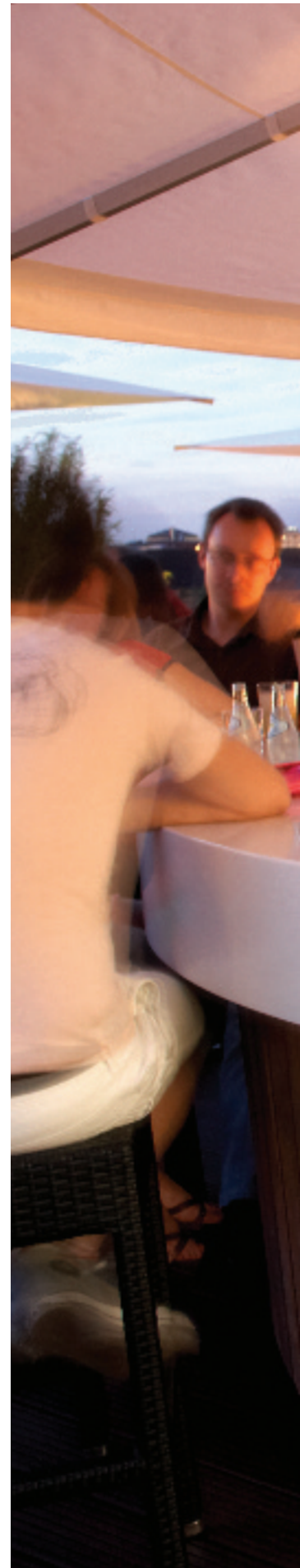
Staron achieves Euro class B with many of its designs and Euro class C with all the rest. This level of fire retardancy is exceptional and has qualified Staron to be used in high traffic transport areas where the fire regulations are obviously some of the most stringent.

STRONG AND DURABLE

Staron surfaces are so well produced and tough, they have passed the ISO 16933 based bomb blast test and is classed as compliant with the stringent requirements of the UK's Department for Transport's AISAD document for the wall panelling systems used in UK airports.

REPAIRABILITY

One of Staron's many fine features is its capacity to be repaired. In the rare event that a surface should suffer a serious impact, damaged areas can be brought back to life to look as good as new.





STARON® SOLID
SURFACES WILL
NOT BLEACH OR
FADE IN SUNLIGHT





APPLICATIONS & LOCATIONS

STARON® CAN BE USED WITHIN ALL COMMERCIAL AND DOMESTIC CONSTRUCTION PROJECTS. ON THE FOLLOWING PAGES, WE SHOW TANGIBLE EXAMPLES OF SOME OF THE LOCATIONS AND APPLICATIONS WHERE STARON HAS BEEN SUCCESSFULLY SPECIFIED.

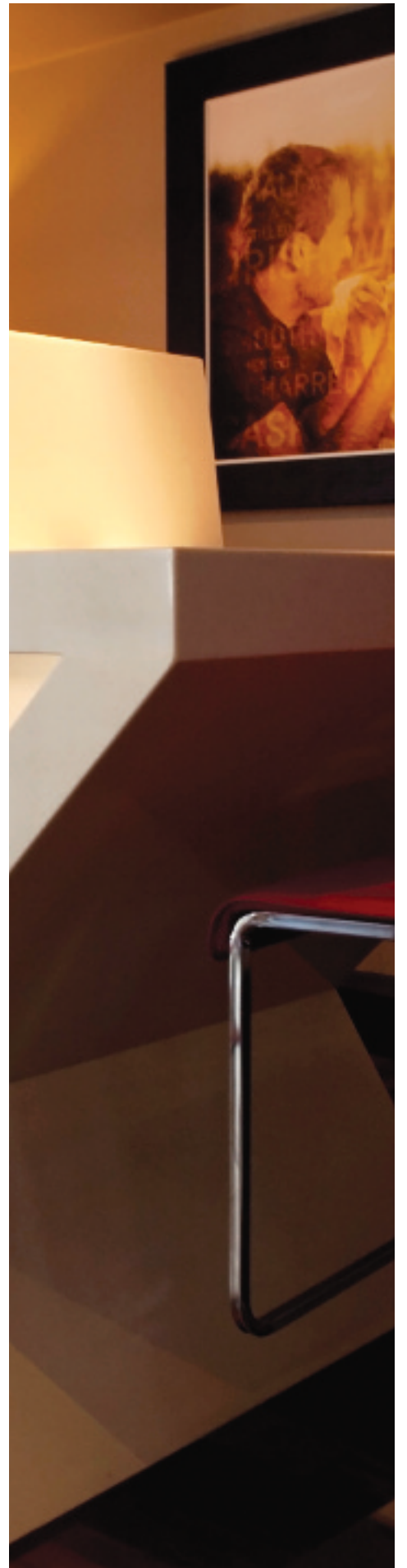
HOTEL AND LEISURE

For hotel bedrooms with allure, Staron creates enticing interiors which will make your guests want to return again and again. Choose moody, dark colours for boudoir chic, or lighter shades for minimalist elegance. Whichever Staron you choose, your hotel bedroom will be easy to clean and continue to look good, despite a constant stream of guests and their luggage, thanks to Staron's excellent impact resistance.

Staron is also an ideal material for creating cutting-edge student villages for the 21st century with contemporary dormitories and stylish communal areas, ideal for socialising, relaxing and studying. Staron surfaces cannot fail to impress tomorrow's students and will prove to be a smart investment thanks to its practical, hardwearing qualities.



STARON® WILL
CREATE ENTICING
INTERIORS
WITH MINIMALIST
ELEGANCE





GASTRONOMY

Whether you are designing a fast food counter, chic city delicatessen or up-market eatery, Staron provides a visually striking and hygienically safe surface on which to prepare and serve food.

Heat resistant to 130°C, Staron is certified NSF-51 food-safe, 100% waterproof and fire retardant to Euro class B on a wide range of designs. For the ultimate in integration, Staron basins are available in a range of sizes and styles to complete the fluid lines. Add some Staron thermoformability as seen in these images and you can create a truly unique, but completely practical and easy to maintain environment.



STARON® IS
A HYGIENICALLY
SAFE SURFACE
IDEAL FOR FOOD
PREPARATION

HEALTHCARE AND LABORATORIES

Where health and safety requirements are stringent, Staron is ahead of the field. Today's healthcare practitioners know how important hygiene is to patients, staff and visitors. A non-porous, inert surface which cannot harbour germs, Staron meets the rigorous demands of today's medical and clinical research professions.

A one-piece Staron worksurface with an integrated sink provides the ultimate hygienic workstation, where it is almost impossible for mould and mildew to form.

Seamless wall cladding is another perfect use of Staron to create a hygienic, easy to clean environment for modern health care applications.

In hospitals, care homes, dental surgeries and other healthcare centres, Staron surfaces provide worry-free work stations, benches, desks and reception areas, even in the most demanding of environments.

Today's laboratory surfaces must be able to withstand moisture, staining, chemicals and impact - more importantly, they must be sterile.

Laboratory stains such as iodine can be easily removed with mild abrasive cleaners and scouring pads. Even harsh chemicals including acids and solvents will not harm Staron, provided they are not left in contact with the surface for any length of time. Integrated sinks within the worksurfaces ensure germs and mould are kept at bay.



STARON® SURFACES
ARE TECHNICALLY
BRILLIANT





FAÇADE CLADDING

Staron's toughness, UV stability, stain and chemical resistance and temperature tolerance makes it a surface that can be specified with the correct installation fittings for exterior as well as interior applications.



staron®
Solid Surfaces



RETAIL

Life can be tough on the high street and creating the right environment for consumers is key to the success of any store. Staron's colours and thermoformability can give you the tools you need to create exciting, practical shopping environments. Consumer products can be enticingly displayed to great effect within a Staron open cabinet or on a shelf or pedestal, especially when they are combined with clever lighting effects.



STARON® CREATES
A BEAUTIFUL AND
PRACTICAL RETAIL
EXPERIENCE



TRANSPORT

Staron has achieved the stringent requirements of the Euro class B fire classification and is UK airport AISAD blast test compliant. These fantastic performance characteristics allow Staron to be specified with safety into the mass – transit areas of the UK's transport industry. Not only fire resistant and literally bombproof, but also ultra violet and waterproof: Staron is a first class material.

A constant flow of people, grubby finger marks and everyday wear and tear demand a highly durable surface material that is easy to clean.

In airports, railway carriages, ticketing offices, station forecourts and even yacht interiors, Staron surfaces create a welcoming and practical environment for today's well-travelled public.

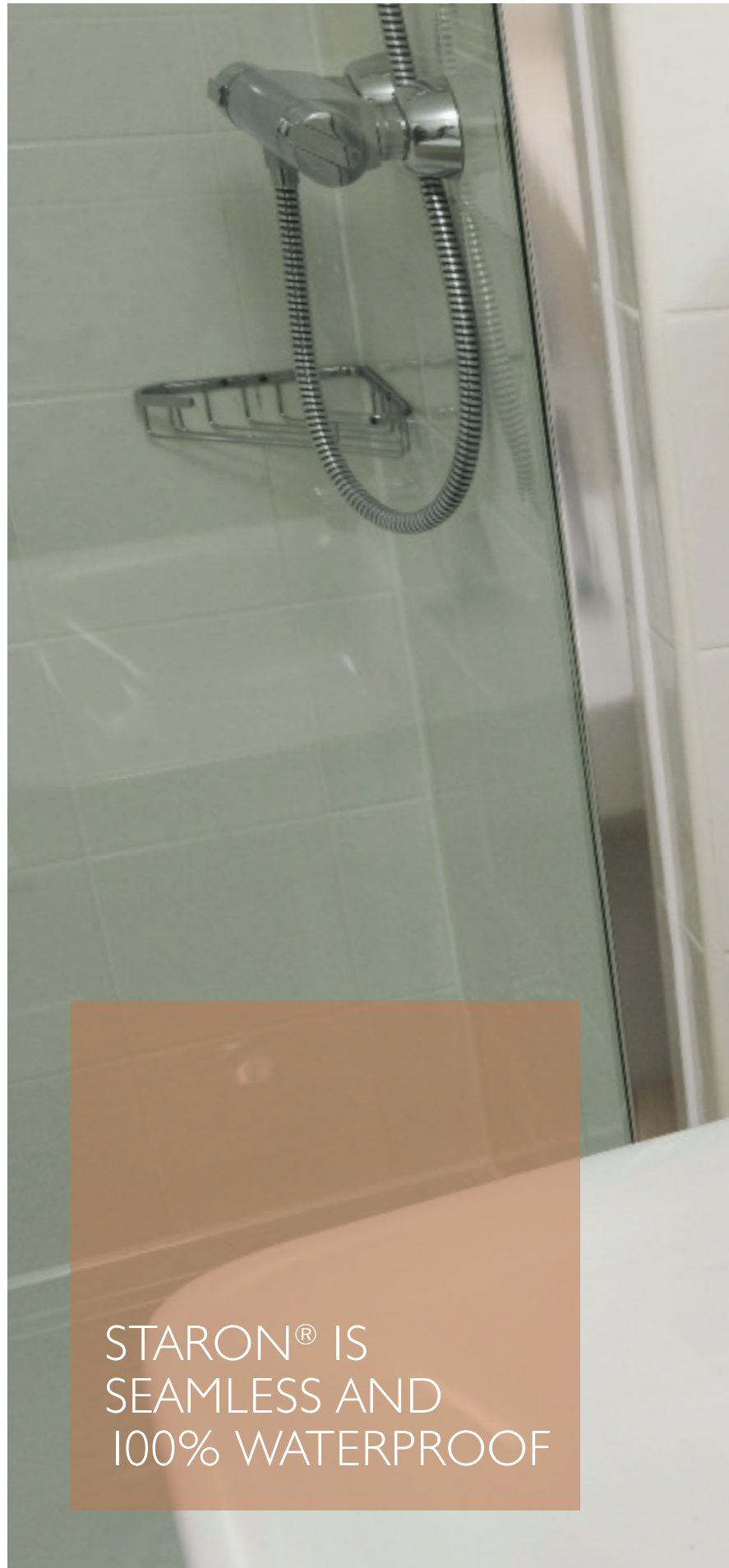




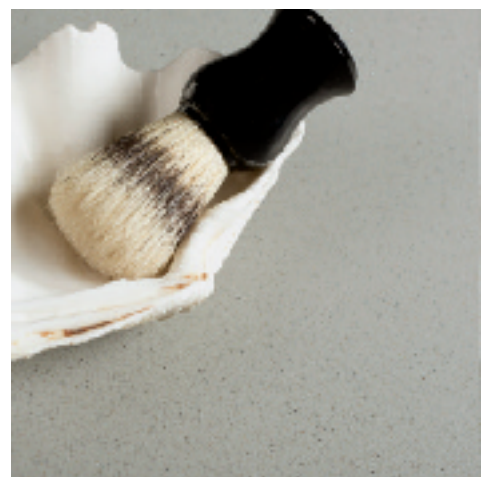
STARON® IS
NOT ONLY FIRE
RESISTANT BUT,
EASY TO CLEAN
AND DURABLE

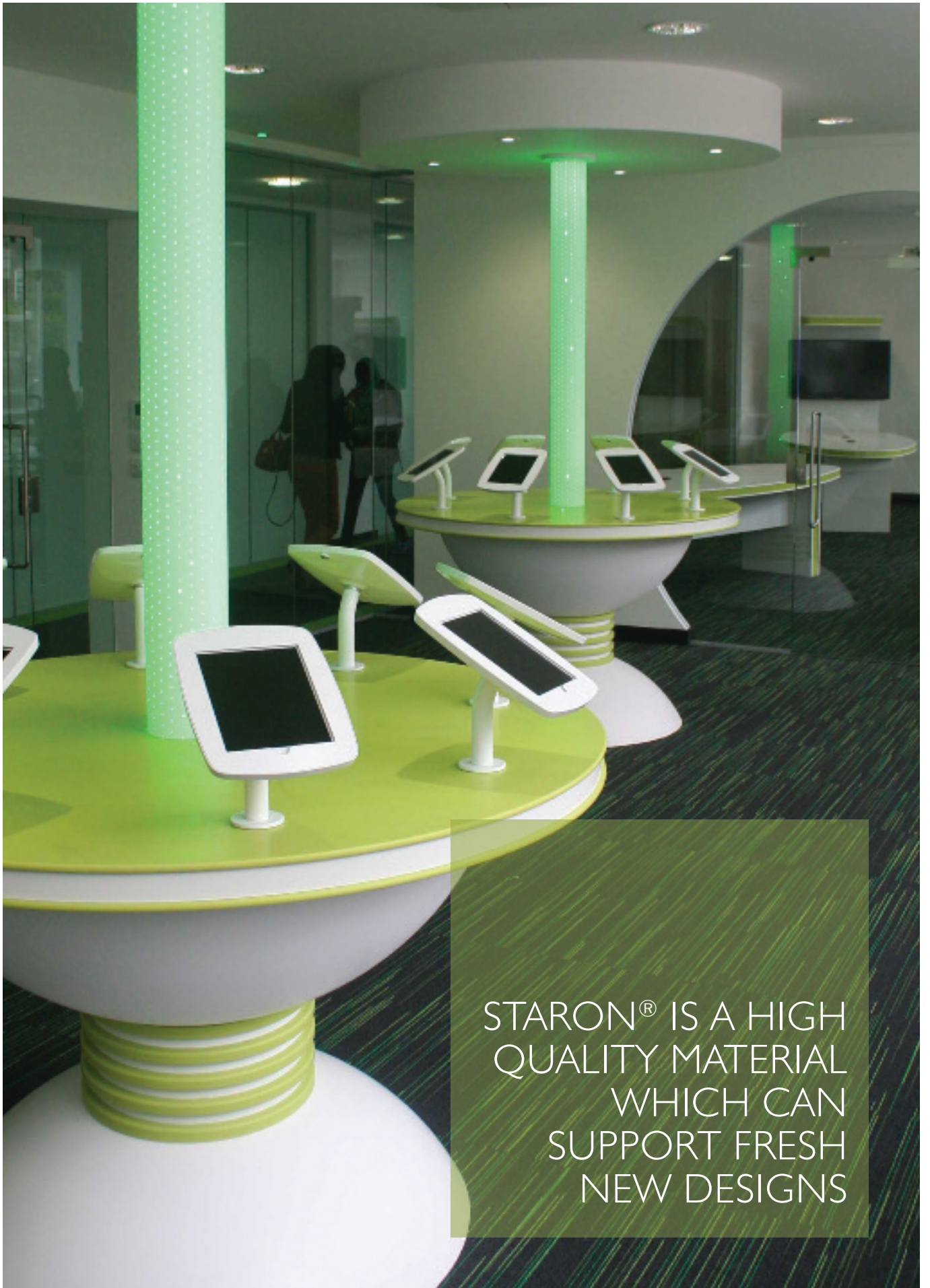
WETROOMS, CUBICLES AND CHANGING AREAS

Staron is resilient, non-porous and smooth. With no visible joins, mould and bacteria have no chance of survival in a wet area. These qualities make Staron ideal for clean, attractive, germ-free changing rooms, gyms, swimming pools, hotels and spas. Shower, changing and toilet partitions and cubicles can be formed from Staron, which will thrive in steamy surroundings, repelling water and standing up to wear and tear. Flowing designs can be lovingly realised with integrated basins imparting a continuous surface which is easy to clean and maintain. Choose pure white for minimalist chic, or any of the impressive range of over 85 colours and finishes.



STARON[®] IS
SEAMLESS AND
100% WATERPROOF





STARON® IS A HIGH
QUALITY MATERIAL
WHICH CAN
SUPPORT FRESH
NEW DESIGNS

SCHOOLS AND FURTHER EDUCATION

Inspire future generations by using Staron in classrooms, science labs, changing rooms and sports facilities - in fact any educational environment where surface materials that will last for decades are of primary importance.

With plans for more Academies and Free Schools in the pipeline, Staron offers a high quality material which can support fresh new designs suitable for these new 'super schools'. Vitalise pupils with Staron's poppy reds and sunflower yellows, or use calming neutrals for quiet places and thinking spaces.

Staron holds both the Greenguard Children and Schools Certification and an Indoor Air Quality Certificate for its low emissions which makes it the ideal material for use in all educational applications.





DOMESTIC KITCHENS AND BATHROOMS

Staron's certification as NSF-51 food-safe and 100% waterproof qualities combined with imperceptible seams, makes it an ideal material for modern kitchens and bathrooms.

Staron also brings a unique flair to any kitchen or bathroom. Minimalist designs, such as those shown, convey a real beauty and instill a sense of quality and outstanding craftsmanship. With a comprehensive choice of colours and decors to suit the most discerning of palettes, Staron can give you the flexibility to create the style you want for the perfect kitchen or bathroom.

STARON® IS NOT
ONLY STYLISH
BUT COMPLETELY
HYGIENIC



CASE STUDY – NATURAL HISTORY MUSEUM

After visiting Blackheath's Staron exhibition stand at the 100 Percent Design Show, the Natural History Museum's in-house designer, Gemma Smith, worked with us and award-winning design, build and fit out company, Paragon Creative.

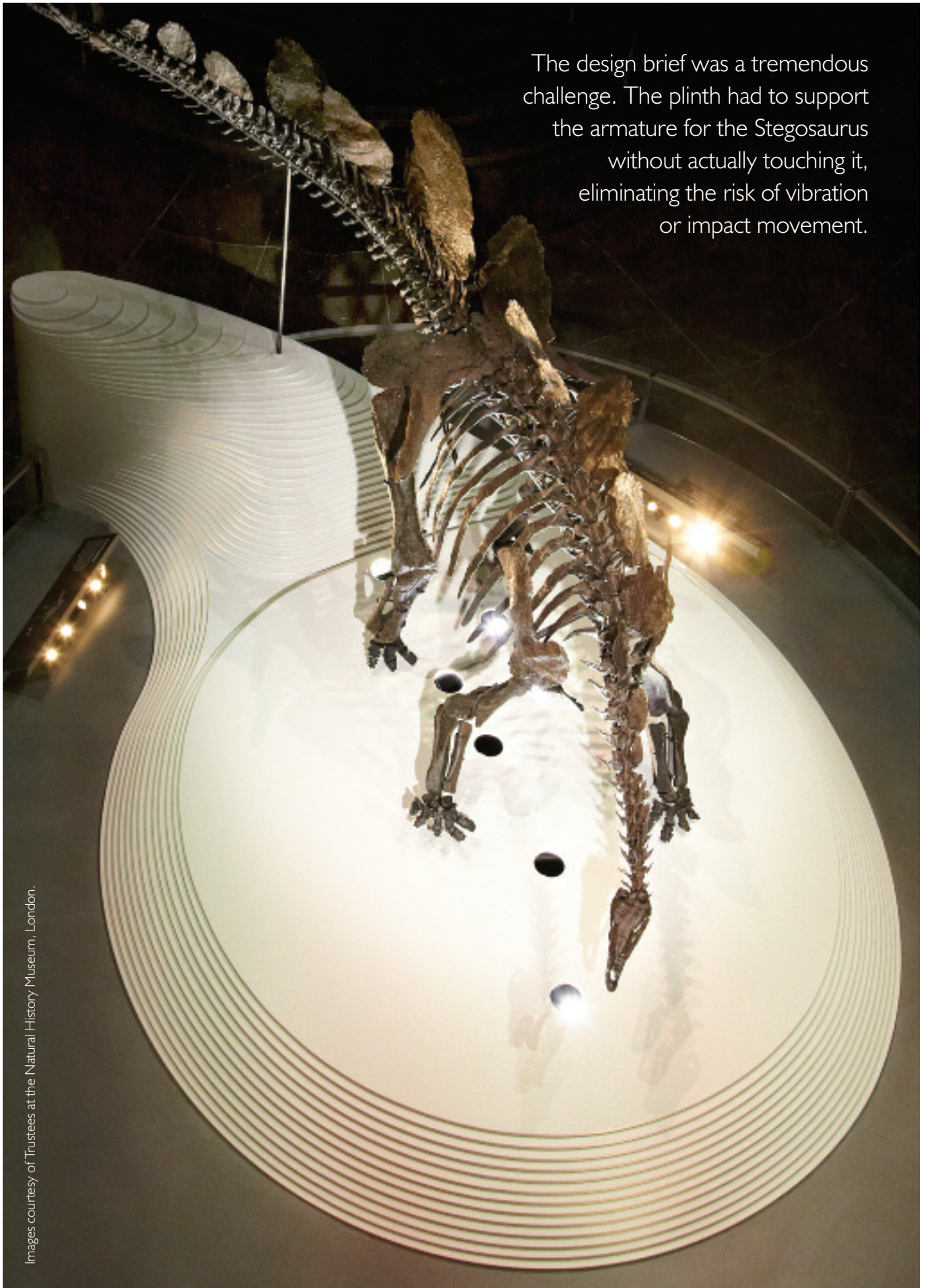
York-based Paragon Creative was commissioned to create a plinth which would house the most complete Stegosaurus skeleton in the world. The dinosaur, on display at London's Natural History Museum, was discovered in 2003 in Wyoming, USA and existed around 150 million years ago.

In total, the armature and skeleton weighs 900kg. Paragon's Production Design and Solid Surface facility designed an internal independent steel frame inside the outer plinth, which sits on bespoke shock absorbent feet. The outer plinth then surrounds and covers this inner plinth with no contact what so ever. This outer plinth is covered in two colours of Staron Solid Surface (Sanded Tundra and Sanded Stratus). Each layer has been CNC cut and fabricated to exact dimensions, which keeps the contours precise and even, and ensures the structure of the plinth is strong enough to carry the weight of the Stegosaurus. The whole plinth and Armature was then erected in Paragon's Solid Surface workshop in York before being dismantled and shipped down to the Natural History Museum and installed on site behind tight security.

Paragon also built a Staron Solid Surface interpretation table, incorporating replicas of the dinosaur supplied by Propshop and Graphics and AV by the Natural History Museum.



The design brief was a tremendous challenge. The plinth had to support the armature for the Stegosaurus without actually touching it, eliminating the risk of vibration or impact movement.



CASE STUDY – MERTHYR TYDFIL COLLEGE

Merthyr Tydfil College needed reception counters for the main entrance and each department entrance, as well as food service counters and cash desks for the coffee shop and refectory areas.

The Staron design: Tempest Zenith was chosen as it best reflected the appearance of the shale rock that makes up a large part of the geology of the Merthyr Tydfil area.

Each of the reception desks were machined with a CNC router to allow Bright White Staron to be inlaid flush into the Zenith design to provide location signage in both Welsh and English. This work, while intricate, provided bold and clear signs that are easily cleaned and will stay looking as good as new.

The project architect was Boyes Rees of Cardiff and the main contractor was Interserve. The reception counters were manufactured by Limebright of Newport Gwent and the service and coffee shop surfaces were manufactured by Counterline of Liverpool.

Staron's design features were utilised to their full; hygienic and easy to clean seamless surfaces with strong construction and great looks!









SINKS AND DÉCORS

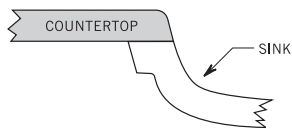
BLACKHEATH, STARON'S EXCLUSIVE UK AND IRELAND DISTRIBUTOR, HOLDS OVER 85 DÉCORS IN STOCK IN A CENTRALLY LOCATED WAREHOUSE FACILITY. THIS HUGE STOCKHOLDING IS COMPLEMENTED BY A WIDE RANGE OF SINKS SPECIFICALLY DESIGNED FOR USE WITH STARON SOLID SURFACING SHEET MATERIALS.

SOLID SURFACE SINKS AND BOWLS

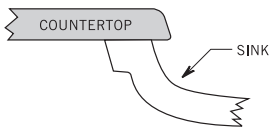
The solid surface sinks and bowls fully integrate and have no open joints or seams when installed into Staron solid surfaces. This means you have a completely hygienic and easy to maintain surface and sink or bowl which flow together giving you a sensational look.

MOUNTING OPTIONS

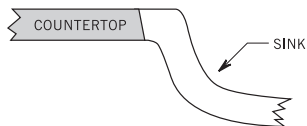
SEAM MOUNT



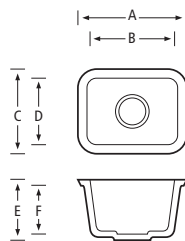
UNDERMOUNT



ANGLED MOUNT



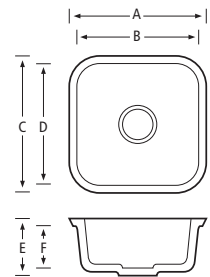
A1121
Bright White



| | | | |
|---|-------|---|-------|
| A | 416mm | D | 266mm |
| B | 356mm | E | 180mm |
| C | 326mm | F | 165mm |



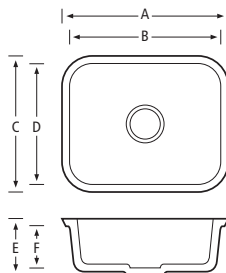
A1181
Bright White



| | | | |
|---|-------|---|-------|
| A | 460mm | D | 400mm |
| B | 400mm | E | 225mm |
| C | 460mm | F | 208mm |



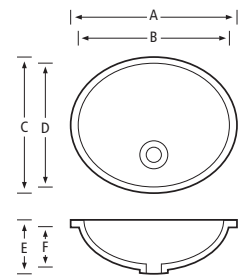
A1231
Bright White



| | | | |
|---|-------|---|-------|
| A | 592mm | D | 422mm |
| B | 532mm | E | 202mm |
| C | 482mm | F | 187mm |



A3181
Bright White

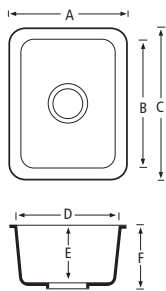


| | | | |
|---|-------|---|-------|
| A | 462mm | D | 336mm |
| B | 422mm | E | 156mm |
| C | 376mm | F | 139mm |

CAST SINKS AND BOWLS



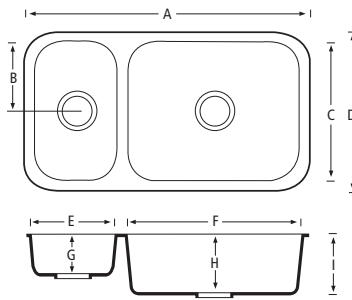
A1131
Bright White



| | | | |
|---|-------|---|-------|
| A | 341mm | D | 281mm |
| B | 400mm | E | 133mm |
| C | 460mm | F | 148mm |



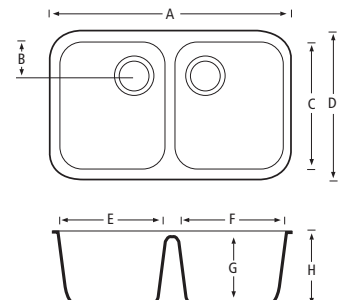
A2341
Bright White



| | | | |
|---|-------|---|-------|
| A | 886mm | F | 533mm |
| B | 213mm | G | 127mm |
| C | 426mm | H | 191mm |
| D | 486mm | I | 206mm |
| E | 254mm | | |



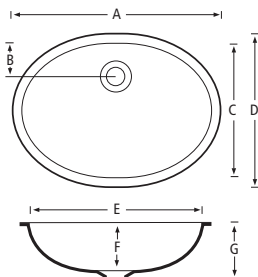
A2311
Bright White



| | | | |
|---|-------|---|-------|
| A | 794mm | E | 348mm |
| B | 110mm | F | 348mm |
| C | 421mm | G | 235mm |
| D | 481mm | H | 250mm |



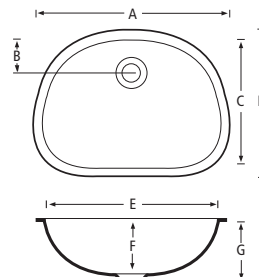
A3211
Bright White



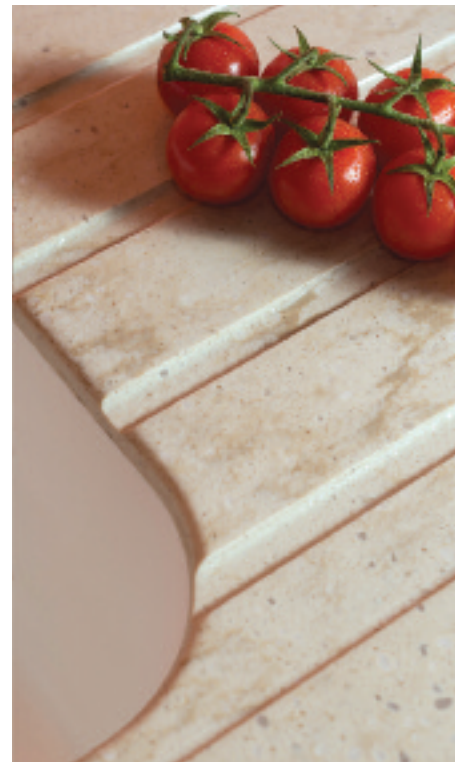
| | | | |
|---|-------|---|-------|
| A | 548mm | E | 508mm |
| B | 66mm | F | 156mm |
| C | 356mm | G | 173mm |
| D | 396mm | | |



A3201
Bright White



| | | | |
|---|-------|---|-------|
| A | 517mm | E | 477mm |
| B | 86mm | F | 140mm |
| C | 346mm | G | 157mm |
| D | 386mm | | |



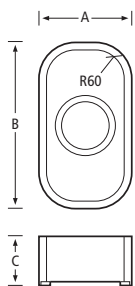
Drainer grooves can be graduated within the solid surface from 2mm – 5mm to create a water fall that drains away drips and splashes.

SINKS AND BOWLS WITH STAINLESS STEEL BASES



CTK0162

Base Options:
Colour Matched / Stainless Steel

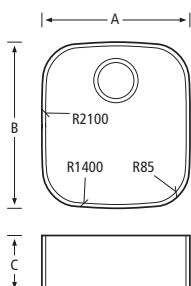


A 162mm
B 300mm
C 95mm



CTK0375

Base Options:
Colour Matched / Stainless Steel

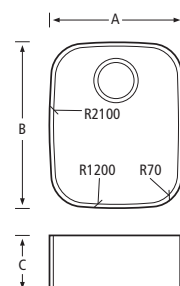


A 375mm
B 420mm
C 150mm



CTK0332

Base Options:
Colour Matched / Stainless Steel

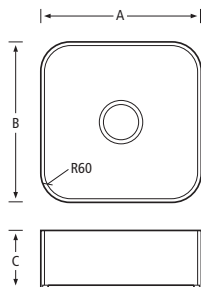


A 332mm
B 418mm
C 150mm



CTK0400

Base Options:
Colour Matched / Stainless Steel

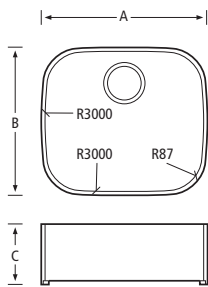


A 400mm
B 400mm
C 150mm



CTK0450

Base Options:
Colour Matched / Stainless Steel

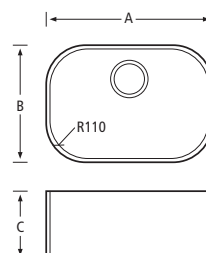


A 450mm
B 400mm
C 150mm



CTK0495

Base Options:
Colour Matched / Stainless Steel



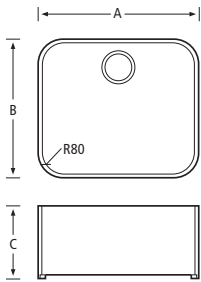
A 495mm
B 345mm
C 150mm



CTK0550

Base Options:

Colour Matched / Stainless Steel



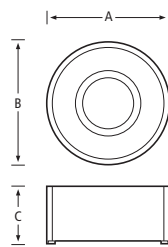
- A 162mm
- B 300mm
- C 95mm



TK0199

Base Options:

Colour Matched / Stainless Steel



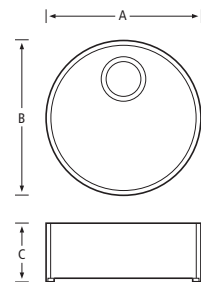
- A 199mm
- B 199mm
- C 100mm



TK0385

Base Options:

Colour Matched / Stainless Steel



- A 385mm
- B 385mm
- C 150mm



SPECIALLY ORDERED SINKS AND BOWLS

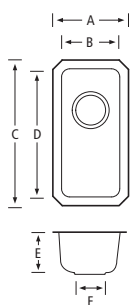
Staron sinks and bowls can also be formed using any of the Staron décors available in the UK and Ireland.

These specially ordered sinks can either colour match or contrast with the surrounding Staron surfaces into which they can be seamlessly installed.

STAINLESS STEEL UNDERMOUNT SINKS



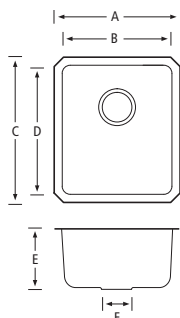
ESK
0.5 bowl / Stainless Steel



| | | | |
|---|-------|---|-------|
| A | 230mm | D | 400mm |
| B | 180mm | E | 124mm |
| C | 450mm | F | 90mm |



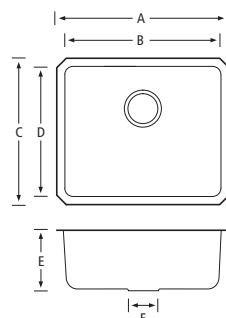
WEAVER
1.0 bowl / Stainless Steel



| | | | |
|---|-------|---|-------|
| A | 390mm | D | 400mm |
| B | 340mm | E | 195mm |
| C | 450mm | F | 90mm |



TWISS
1.0 bowl / Stainless Steel



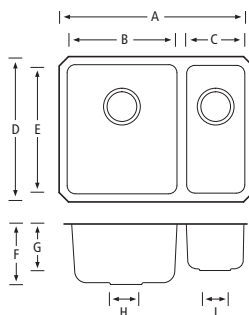
| | | | |
|---|-------|---|-------|
| A | 530mm | D | 400mm |
| B | 480mm | E | 200mm |
| C | 450mm | F | 90mm |



The high grade 18/10 stainless steel of these undermount sinks ensures a quality finish and long term corrosion resistance.



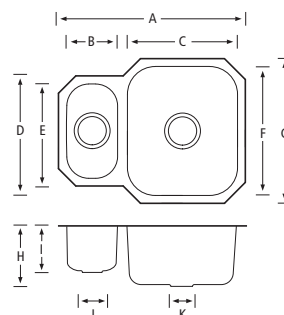
BRETT
1.5 bowl / Stainless Steel



| | | | |
|---|-------|---|-------|
| A | 600mm | F | 184mm |
| B | 340mm | G | 124mm |
| C | 180mm | H | 90mm |
| D | 450mm | I | 90mm |
| E | 400mm | | |



TRENT
1.5 bowl / Stainless Steel

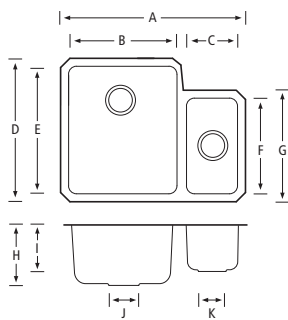


| | | | |
|---|-------|---|-------|
| A | 594mm | G | 460mm |
| B | 164mm | H | 185mm |
| C | 350mm | I | 114mm |
| D | 300mm | J | 90mm |
| E | 350mm | K | 90mm |
| F | 410mm | | |



COLNE

1.5 bowl / Stainless Steel

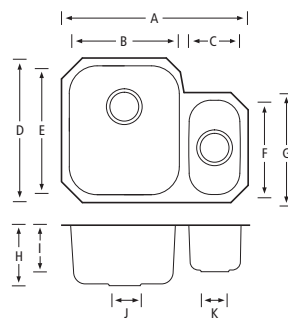


| | | | |
|---|-------|---|-------|
| A | 580mm | G | 300mm |
| B | 340mm | H | 190mm |
| C | 160mm | I | 120mm |
| D | 450mm | J | 90mm |
| E | 400mm | K | 90mm |
| F | 250mm | | |



DERWENT

1.5 bowl / Stainless Steel



| | | | |
|---|-------|---|-------|
| A | 594mm | G | 350mm |
| B | 350mm | H | 189mm |
| C | 164mm | I | 114mm |
| D | 460mm | J | 90mm |
| E | 410mm | K | 90mm |
| F | 300mm | | |





| STARON COLOUR | CODE | 6mm SHEET 2500 x 760mm | 12.3mm SHEET 3680 x 760mm | 12.3mm SHEET 1840 x 760mm | CERTIFICATIONS | |
|-----------------------|--------|---------------------------|------------------------------|------------------------------|----------------|---------------|
| | | | | | SCS | FR EURO CLASS |
| ASPEN BROWN | AB 632 | - | • | • | | B |
| ASPEN FIESTA | AF 611 | - | • | • | - | B |
| ASPEN GLACIER | AG 612 | • | • | • | - | C |
| ASPEN LAVA | AL 650 | - | • | • | - | B |
| ASPEN MINE | AM 633 | - | • | • | | C |
| ASPEN PEPPER | AP 640 | - | • | • | | B |
| ASPEN SKY | AS 670 | - | • | • | - | B |
| ASPEN SNOW | AS 610 | - | • | • | | C |
| EATHERN BARK | QL 257 | - | • | • | - | B |
| EATHERN STRATUM | QL 287 | - | • | • | - | B |
| METALLIC GALAXY | EG 595 | - | • | • | - | C |
| METALLIC SLEEK SILVER | ES 581 | - | • | • | - | B |
| METALLIC YUKON | EY 510 | - | • | • | - | C |
| PEBBLE BLUE | PB 870 | - | • | • | | C |
| PEBBLE CHIFFON | PC 842 | - | • | • | - | B |
| PEBBLE EBONY | PE 814 | - | • | • | | B |
| PEBBLE GOLD | PG 840 | - | • | • | | C |
| PEBBLE GREY | PG 810 | - | • | • | - | C |
| PEBBLE ICE | PI 811 | - | • | • | - | C |
| PEBBLE SARATOGA | PS 820 | - | • | • | | C |
| PEBBLE SWAN | PS 813 | - | • | • | - | C |
| PEBBLE TERRAIN | PT 857 | - | • | • | - | C |
| QUARRY MINETTE | QM 289 | - | • | • | - | B |
| QUARRY OYSTER | TO 310 | - | • | • | | C |
| QUARRY STARRED | QS 287 | - | • | • | - | B |
| SANDED BIRCH | SB 412 | - | • | • | - | B |
| SANDED CORNMEAL | SC 433 | - | • | • | - | C |
| SANDED CLAY | SC 475 | - | • | • | - | B |
| SANDED CREAM | SM 421 | - | • | • | | C |
| SANDED DARK NEBULA | DN 421 | - | • | • | | C |
| SANDED DOVER | SD 413 | - | • | • | - | B |
| SANDED GOLD DUST | SG 441 | - | • | • | | B |
| SANDED GREY | SG 420 | - | • | • | | C |
| SANDED HERON | SH 428 | - | • | • | - | B |
| SANDED ICICLE | SI 414 | - | • | • | - | C |
| SANDED MOCHA | SM 453 | - | • | • | - | B |
| SANDED OATMEAL | SO 446 | - | • | • | - | C |
| SANDED ONYX | SO 423 | • | • | • | | B |
| SANDED PAPYRUS | SP 474 | - | • | • | - | C |
| SANDED SAHARA | SS 440 | - | • | • | | B |
| SANDED STRATUS | SS 418 | - | • | • | - | B |
| SANDED TUNDRA | ST 482 | - | • | • | - | C |
| SANDED VERMILLION | SV 430 | - | • | • | - | B |
| SOLID BRIGHT WHITE | BW 010 | • | • | • | - | C |

| STARON COLOUR | CODE | 6mm SHEET 2500 x 760mm | 12.3mm SHEET 3680 x 760mm | 12.3mm SHEET 1840 x 760mm | CERTIFICATIONS | |
|------------------------------|--------|---------------------------|------------------------------|------------------------------|----------------|---------------|
| | | | | | SCS | FR EURO CLASS |
| SOLID FOG | SF 020 | - | • | • | - | C |
| SOLID IVORY | SI 040 | - | • | • | - | C |
| SOLID NATURAL | SV 041 | - | • | • | - | C |
| SOLID PEARL | SP 011 | • | • | • | - | C |
| SOLID PURE WHITE | SP 016 | - | • | • | - | C |
| SOLID QUASAR WHITE | SQ 019 | • | • | • | - | C |
| SUPER SOLID BLIS | SB 022 | - | • | • | - | B |
| SUPER SOLID CALIFORNIA POPPY | SC 052 | - | • | • | - | C |
| SUPER SOLID COOL MINT | SC 063 | - | • | • | - | C |
| SUPER SOLID DAZZLING WHITE | SD 001 | - | • | • | - | C |
| SUPER SOLID EGGPLANT | SV 037 | - | • | • | - | B |
| SUPER SOLID IRIS | SI 056 | - | • | • | - | C |
| SUPER SOLID ONYX | ON 095 | • | • | • | - | C |
| SUPER SOLID PLACID | SP 062 | - | • | • | - | B |
| SUPER SOLID POWDER BLUE | SP 063 | - | • | • | - | C |
| SUPER SOLID SERENE | SS 023 | - | • | • | - | B |
| SUPER SOLID STEEL | ST 023 | - | • | • | - | C |
| SUPER SOLID SUNFLOWER | SS 042 | - | • | • | - | C |
| SUPER SOLID TUSK | ST 015 | - | • | • | - | C |
| SUPER SOLID UNIVERS | SU 053 | - | • | • | - | C |
| SUPREME CLOUDBANK | VC 118 | - | • | • | - | C |
| SUPREME DANDELION | VD 175 | - | • | • | - | C |
| SUPREME DAWN | VD 126 | - | • | • | - | C |
| SUPREME DELPHI | VD 111 | - | • | • | - | C |
| SUPREME LOAM | VL 155 | - | • | • | - | C |
| SUPREME MAGNOLIA | VM 143 | - | • | • | - | C |
| SUPREME NATURAL BRIDGE | VN 144 | - | • | • | - | C |
| SUPREME PASTORAL | VP 177 | - | • | • | - | C |
| TEMPEST BLAZE | FB 147 | - | • | • | - | C |
| TEMPEST CAVIAR | FC 188 | - | • | • | - | C |
| TEMPEST DAZZLE | FD 191 | - | • | • | - | C |
| TEMPEST GENESIS | FG 174 | - | • | • | - | C |
| TEMPEST GLIMMER | FG 144 | - | • | • | - | C |
| TEMPEST HORIZON | FH 114 | - | • | • | - | C |
| TEMPEST METEOR | FM 111 | - | • | • | - | C |
| TEMPEST PEAK | FP 100 | - | • | • | - | C |
| TEMPEST POLAR | FP 111 | - | • | • | - | C |
| TEMPEST RADIANCE (SHIMMER) | FR 148 | - | • | • | - | C |
| TEMPEST RATTAN | FR 124 | - | • | • | - | C |
| TEMPEST SILVERCLOUD | FS 122 | - | • | • | - | C |
| TEMPEST STARFIRE | FS 198 | - | • | • | - | C |
| TEMPEST WHIPPOORWILL | FW 145 | - | • | • | - | C |
| TEMPEST ZENITH | FZ 184 | - | • | • | - | C |

MAKE AN IMPRESSION WITH A NEW STANDARD OF DESIGNS

Taking inspiration from pure nature and unique designs are the major features of these eight designs in the Supreme™ Collection.



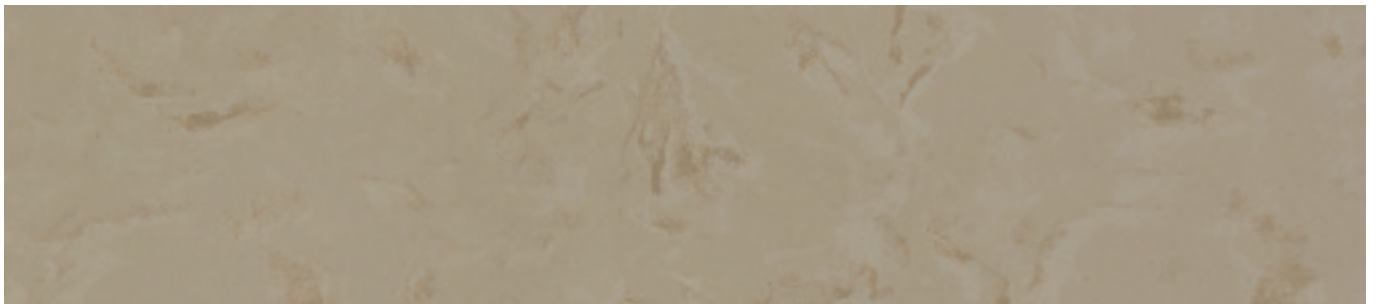
SUPREME DELPHI VD 111



SUPREME DAWN VD 126



SUPREME NATURAL BRIDGE VN 144



SUPREME PASTORAL VP 177

C European fire retardant certificate C (DIN 4102-1 & DIN EN 1350-1)

❖ Dark colours and high gloss finishes – Staron is a durable and repairable solid surface that will last for many years with simple care. Please refer to our 'How to Care for your Solid Surfaces' leaflet. Dark colours and high gloss finishes will, like everything else, potentially show scratches if a worktop saver has not been used. Scratches or abrasions marks are not covered under the Staron 15 year limited warranty. However, if scratches occur over a period of time, the surface can be re-sanded and re-finished, which will remove the scratches. Refinishing your surface must be performed by an authorized Staron fabricator / installer and you will be charged at an hourly service rate.

Whilst every effort has been made to accurately represent the décors within this brochure, we are unable to guarantee an exact match due to the limitations of the printing process. Please view actual sample prior to selection.

Before you install your Staron surface, please verify that batch numbers are the same to ensure a complete colour match.

Supreme

C



SUPREME CLOUDBANK VC 118

C



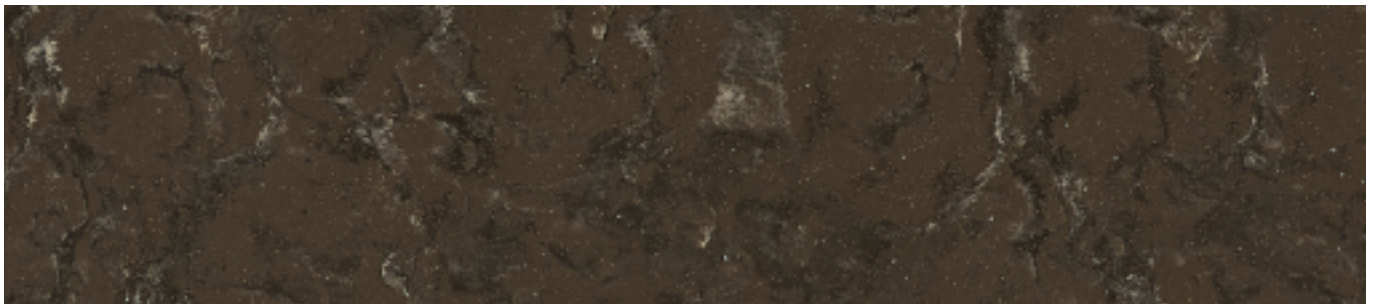
SUPREME MAGNOLIA VM 143

C



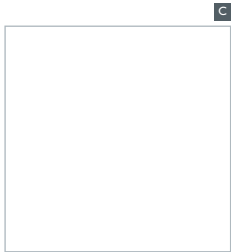
SUPREME DANDELION VD 175

C ❖

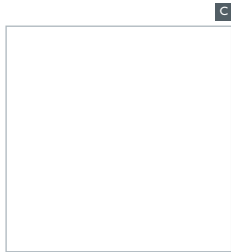


SUPREME LOAM VL 155

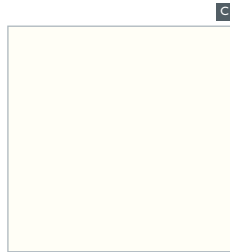
Cases containing all UK and Ireland samples are available on request. Larger individual samples are also available.



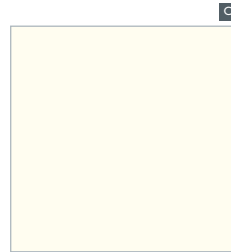
SOLID PURE WHITE
SP 016



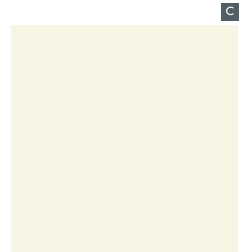
SOLID QUASAR WHITE
SQ 019



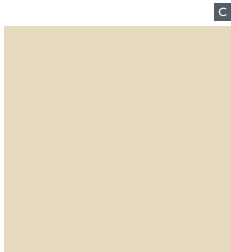
SOLID BRIGHT WHITE
BW 010



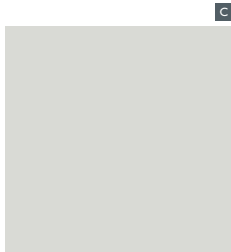
SOLID PEARL
SP 011



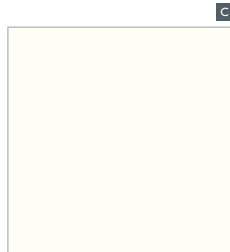
SOLID NATURAL
SV 041



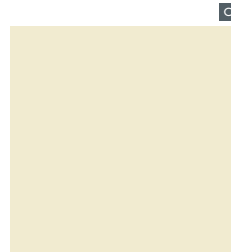
SOLID IVORY
SI 040



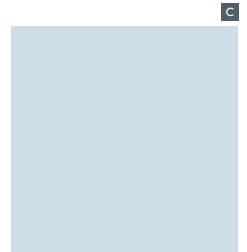
SOLID FOG
SF 020



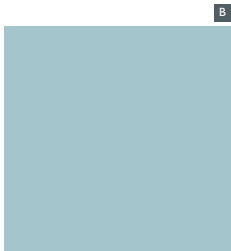
**SUPER SOLID
DAZZLING WHITE
(TRANSLUCENT) SD 001**



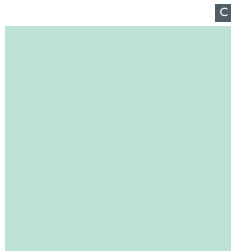
SUPER SOLID TUSK
ST 015



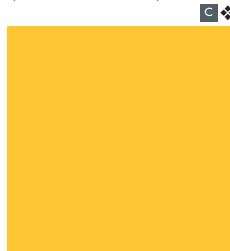
**SUPER SOLID
POWDER BLUE**
SP 063



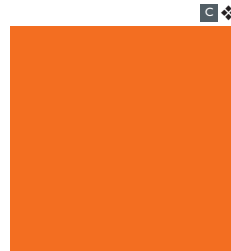
SUPER SOLID PLACID
SP 062



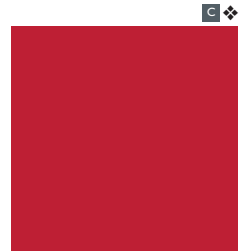
**SUPER SOLID
COOL MINT**
SC 063



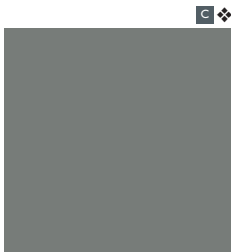
**SUPER SOLID
SUNFLOWER**
SS 042



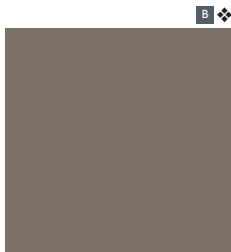
**SUPER SOLID
CALIFORNIA POPPY**
SC 052



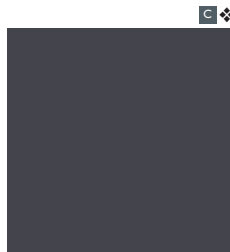
SUPER SOLID UNIVERS
SU 053



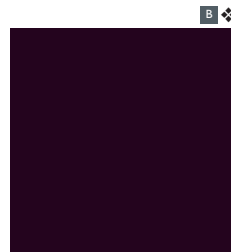
SUPER SOLID BLIS
SB 022



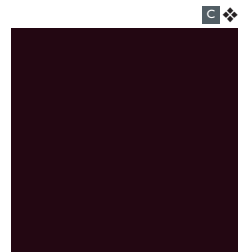
SUPER SOLID SERENE
SS 023



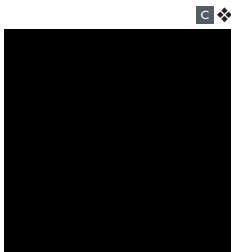
SUPER SOLID STEEL
ST 023



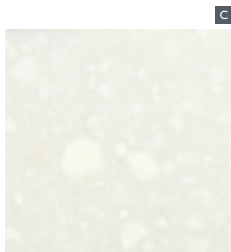
**SUPER SOLID
EGGPLANT**
SV 037



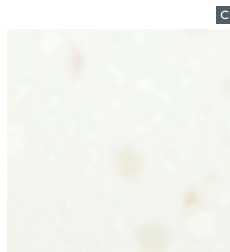
SUPER SOLID IRIS
SI 056



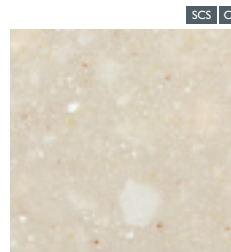
SUPER SOLID ONYX
ON 095



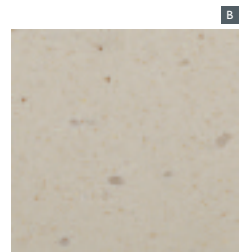
PEBBLE ICE
PI 811



PEBBLE SWAN
PS 813



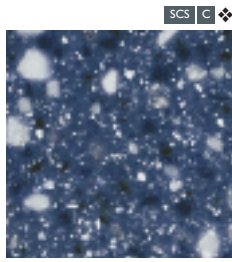
PEBBLE SARATOGA
PS 820



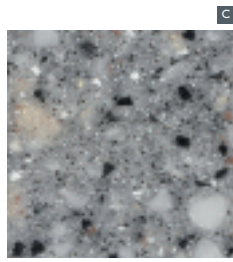
PEBBLE CHIFFON
PC 842



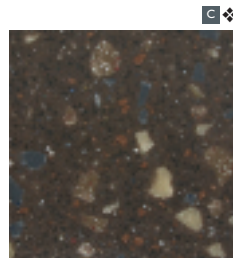
PEBBLE GOLD
PG 840



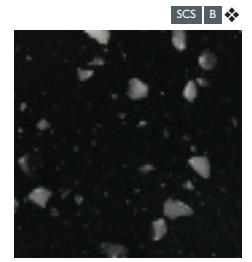
PEBBLE BLUE
PB 870



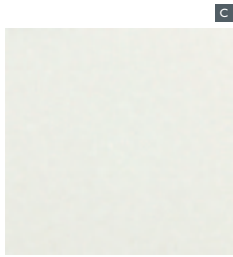
PEBBLE GREY
PG 810



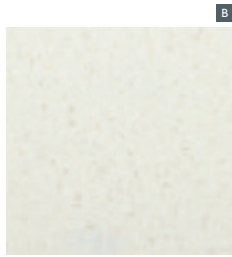
PEBBLE TERRAIN
PT 857



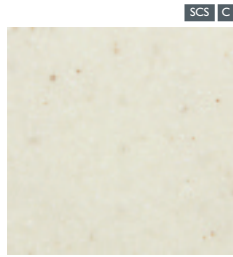
PEBBLE EBONY
PE 814



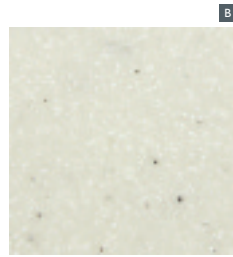
SANDED ICICLE
SI 414



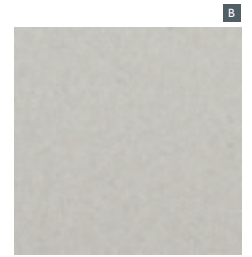
SANDED DOVER
SD 413



SANDED CREAM
SM 421



SANDED BIRCH
SB 412



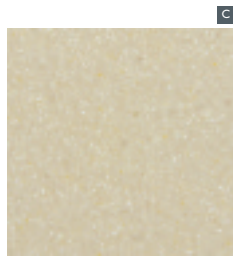
SANDED STRATUS
SS 418



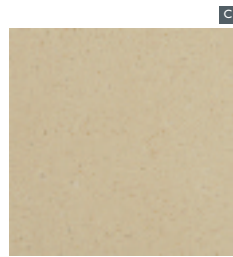
SANDED SAHARA
SS 440



SANDED GOLD DUST
SG 441



SANDED CORNMEAL
SC 433



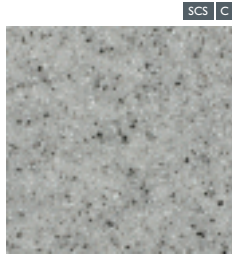
SANDED PAPYRUS
SP 474



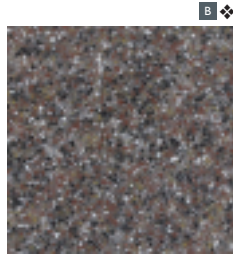
SANDED OATMEAL
SO 446



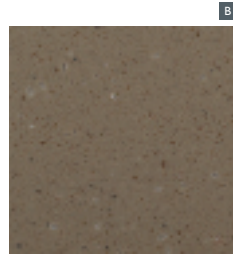
SANDED VERMILLION
SV 430



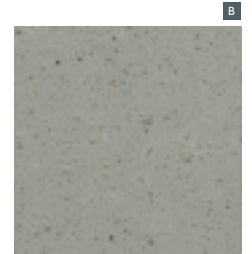
SANDED GREY
SG 420



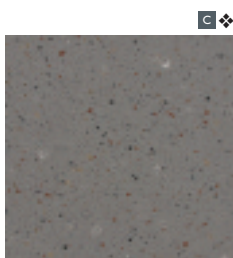
SANDED MOCHA
SM 453



SANDED CLAY
SC 475



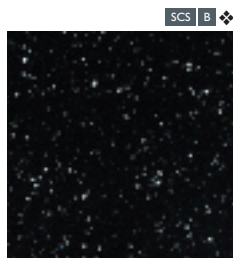
SANDED HERON
SH 428



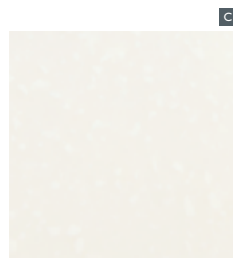
SANDED TUNDRA
ST 482



SANDED DARK NEBULA
DN 421



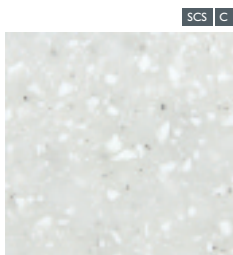
SANDED ONYX
SO 423



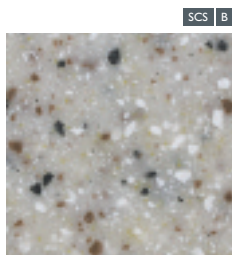
ASPEN GLACIER
AG 612



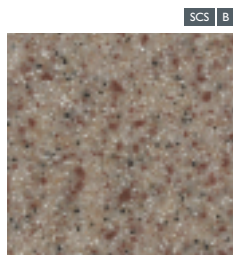
ASPEN FIESTA
AF 611



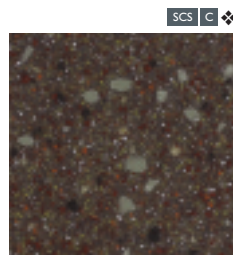
ASPEN SNOW
AS 610



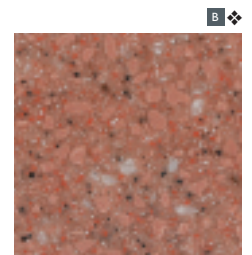
ASPEN PEPPER
AP 640



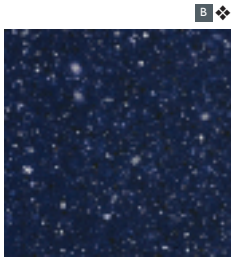
ASPEN BROWN
AB 632



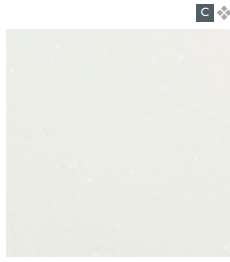
ASPEN MINE
AM 633



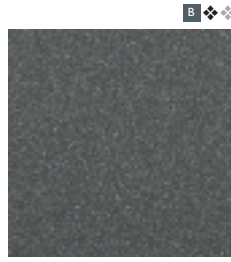
ASPEN LAVA
AL 650



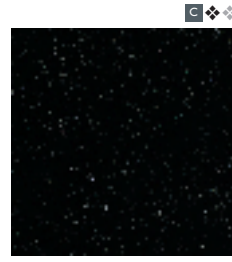
ASPEN SKY
AS 670



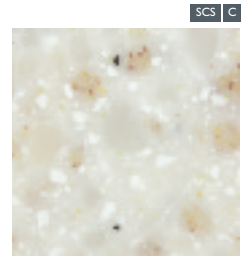
METALLIC YUKON
EY 510



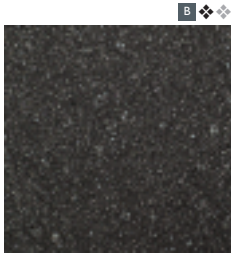
METALLIC SLEEK SILVER
ES 581



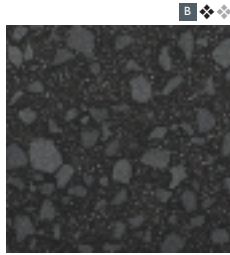
METALLIC GALAXY
EG 595



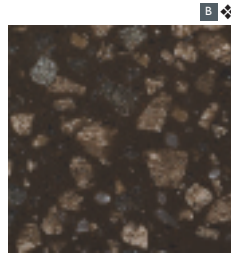
QUARRY OYSTER
TO 310



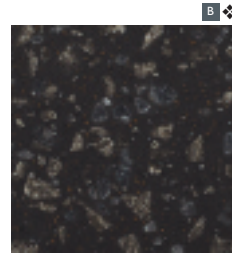
QUARRY STARRED
QS 287



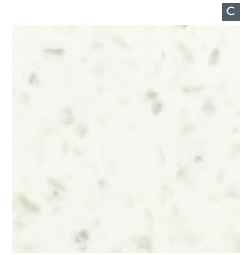
QUARRY MINETTE
QM 289



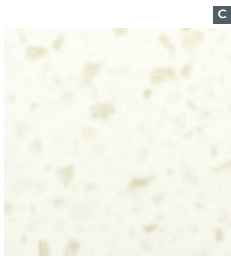
EARTHEN BARK
QL 257



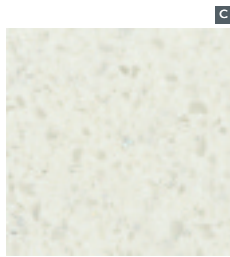
EARTHEN STRATUM
QL 287



TEMPEST PEAK
FP 100



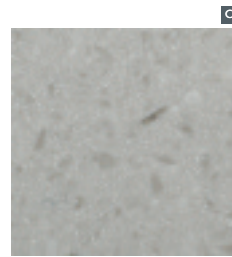
TEMPEST POLAR
FP 111



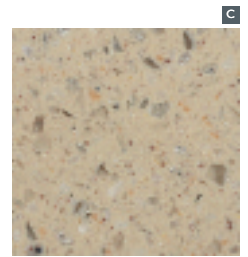
TEMPEST METEOR
FM 111



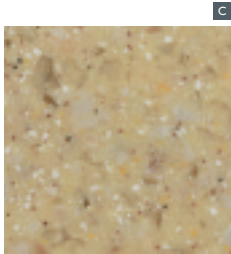
TEMPEST HORIZON
FH 114



TEMPEST SILVERCLOUD
FS 122



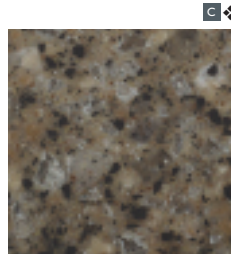
TEMPEST GENESIS
FG 174



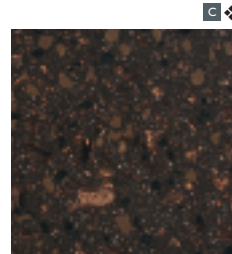
TEMPEST RATTAN
FR 124



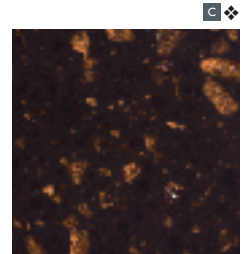
TEMPEST GLIMMER
FG 144



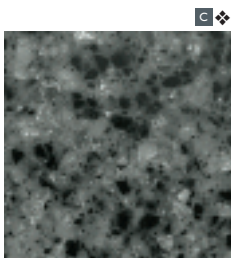
TEMPEST
WHIPPOORWILL
FW 145



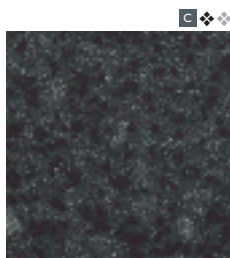
TEMPEST BLAZE
FB 147



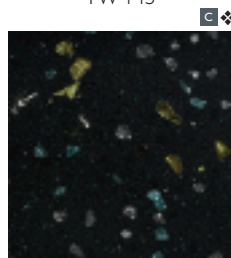
TEMPEST RADIANCE
(SHIMMER)
FR 148



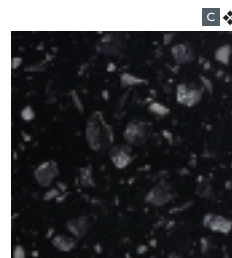
TEMPEST ZENITH
FZ 184



TEMPEST CAVIAR
FC 188



TEMPEST DAZZLE
FD 191



TEMPEST STARFIRE
FS 198

SCS These colours hold the SCS Material Content Certification which verifies that Staron is working responsibly to minimise environmental impact during its manufacturing process.

B European fire retardant certificate BI (DIN 4102-1 & DIN EN 1350-1)

C European fire retardant certificate C (DIN 4102-1 & DIN EN 1350-1)

❖ Dark colours and high gloss finishes – Staron is a durable and repairable solid surface that will last for many years with simple care. Please refer to our 'How to Care for your Solid Surfaces' leaflet. Dark colours and high gloss finishes will, like everything else, potentially show scratches if a worktop saver has not been used. Scratches or abrasions marks are not covered under the Staron 15 year limited warranty. However, if scratches occur over a period of time, the surface can be re-sanded and re-finished, which will remove the scratches. Refinishing your surface must be performed by an authorized Staron fabricator / installer and you will be charged at an hourly service rate.

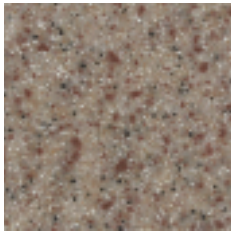
❖ Contains metallic flakes that have reflective properties, which may cause the colour to look different (brightness) depending on the angle of view.

Whilst every effort has been made to accurately represent the décors within this brochure, we are unable to guarantee an exact match due to the limitations of the printing process. Please view actual sample prior to selection.

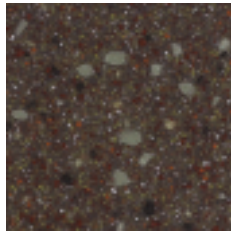
Before you install your Staron surface, please verify that batch numbers are the same to ensure a complete colour match.

ENVIRONMENTAL

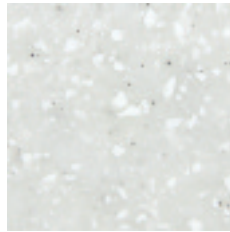
For designers seeking green credentials, Staron's recycled range holds the SCS Material Content Certification which verifies that Staron is working responsibly to minimise environmental impact during its manufacturing process.



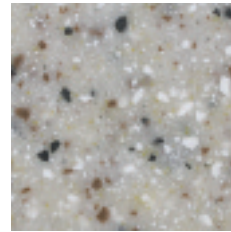
ASPEN BROWN
AB 632



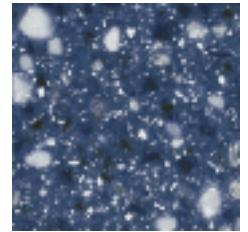
ASPEN MINE
AM 633



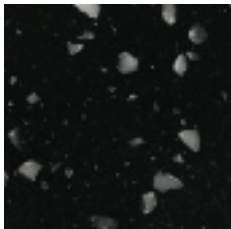
ASPEN SNOW
AS 610



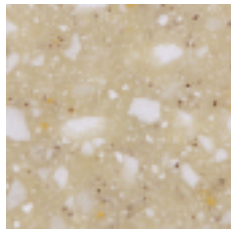
ASPEN PEPPER
AP 640



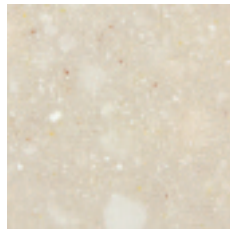
PEBBLE BLUE
PB 870



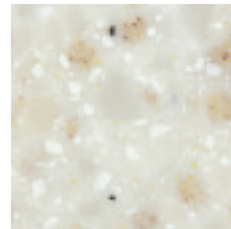
PEBBLE EBONY
PE 814



PEBBLE GOLD
PG 840



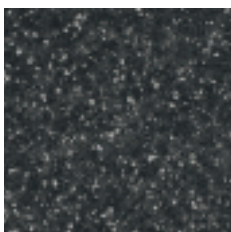
PEBBLE SARATOGA
PS 820



QUARRY OYSTER
TO 310



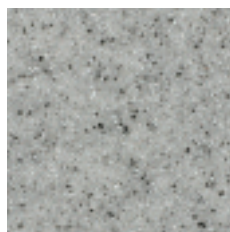
SANDED CREAM
SM 421



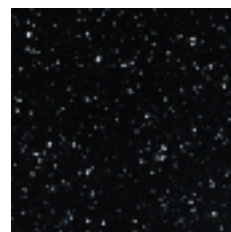
SANDED DARK NEBULA
DN 421



SANDED GOLD DUST
SG 441



SANDED GREY
SG 420



SANDED ONYX
SO 423



SANDED SAHARA
SS 440

Staron's capacity to be repaired in the unlikely event of damage caused by a serious impact is an environmental benefit.

Alternative surfacing materials that have been damaged cannot be repaired and are then often wastefully scrapped.





staron[®]
Solid Surfaces

**BLACKHEATH PRODUCTS LIMITED
EXCLUSIVE UK AND IRELAND
STARON DISTRIBUTOR**

Units 1-4 Fairfield Park,
Halesowen, West Midlands B62 9JL

Free 24 hour faxline: +44 (0)121 561 3939

Telephone: +44 (0)800 634 0114

Email: sheets@blackheathproducts.co.uk

www.staron.uk.com

blackheath 

Blackheath Products Limited has over 50 years experience in the distribution of decorative sheet materials and components to the construction industry.

All Staron designs featured in this brochure are available for immediate delivery by Blackheath Product's fleet of 26 commercial vehicles from its centrally located distribution centre.

We reserve the right to update specifications without notice. E&OE. All dimensions shown are nominal.